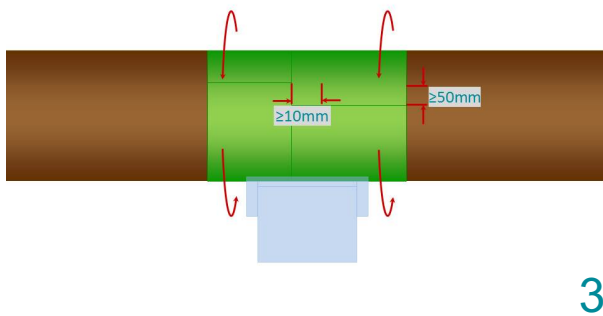


Ensure a proper surface preparation prior to the application of Wrappingband. Pre cut strips of Wrappingband corresponding to the pipeline circumference + approx. 100mm on larger diameter pipelines and approx. 50mm on smaller diameter pipelines.



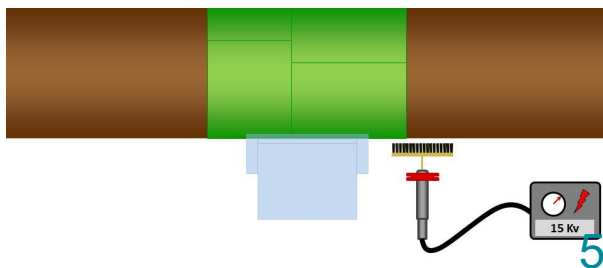
For the ease of application, lift the pipe at least 200mm.



Apply Wrappingband with straight wraps. Side-by-side overlap minimum 10mm. Number of wraps depending on the size of the pipe support.



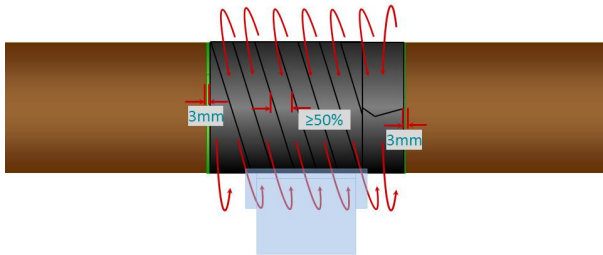
Apply Wrappingband with minimum tension and avoid air inclusions.



A holiday test using a high voltage tester must be carried out on the green Stopaq Wrappingband prior to the application of any Outerwrap. The test must be carried out at a minimum of 15kV.



Always use approved and certified holiday test equipment.

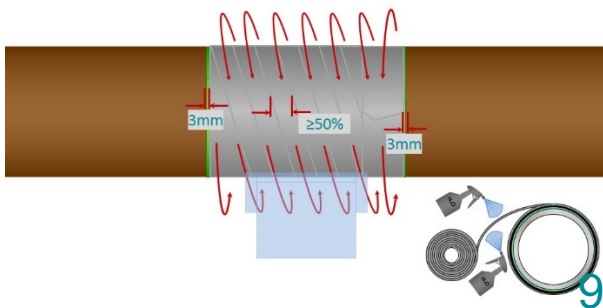


7

Start application of Outerwrap with 2 straight circumferential wraps and continue by means of spiral wrap with a minimum overlap of 50%. Finish with 2 straight circumferential wraps.



Keep 3mm of Wrappingband exposed at both ends.

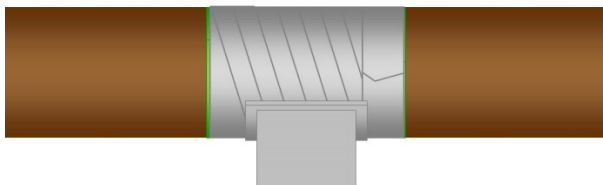


9

Apply Outerglass Shield XT according the specific chapter.



The coating performance will not be badly influenced when the compression foil remains on the Outerglass Shield XT.

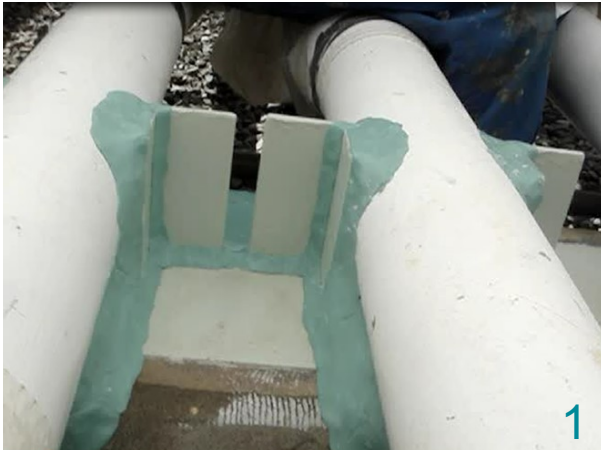


11

Outerglass Shield XT can be coated with a topcoat at above ground pipe supports.

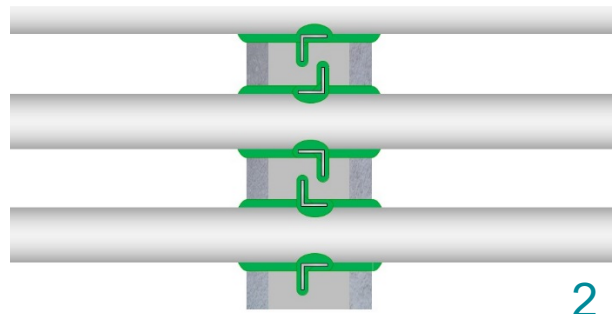


Pipe can be placed in the support after initial curing time of the Outerglass Shield XT. Polyester can be used as an alternative extra mechanical protection layer.



1

Ensure a proper surface preparation prior to the application. Apply Paste CZ in the sharp edges, under and around the pipe at the contact on the support.



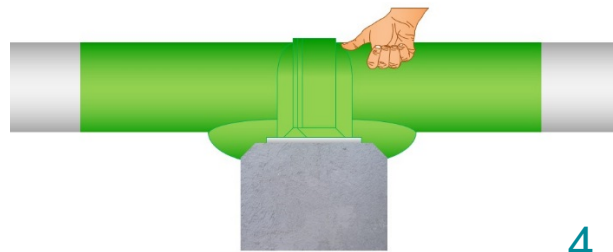
2

Apply without air enclosures and firmly press the materials in all corners, underneath and around the pipe into the pores of the substrates.



3

Apply Stopaq Basecoat over the entire support with a minimum overlap of 10mm on a previous applied strip Basecoat.



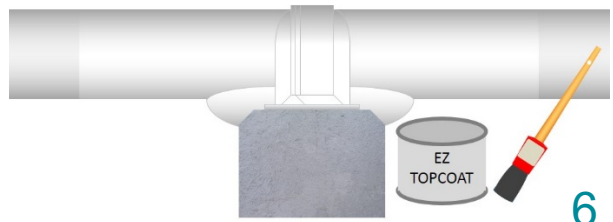
4

Apply without tension and avoid air enclosures. Check the adhesion on a regular base.



5

Apply EZ Topcoat over the entire area.



6

...