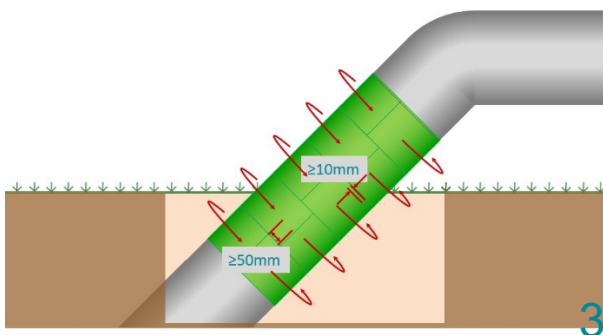


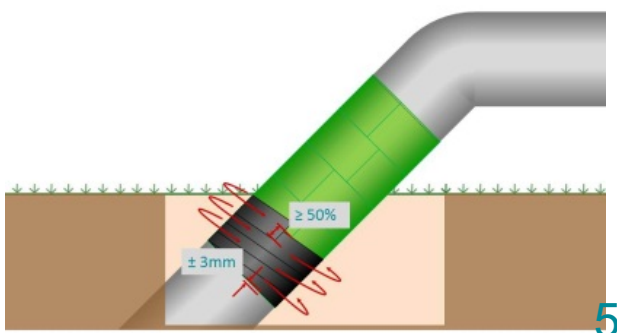
Ensure a proper surface preparation prior to the application of Wrappingband. Excavate area around the riser according to the drawing.



Apply Wrappingband on the entire surface according chapter 5 or 6. A holiday test using a high voltage tester must be carried out on the green Stopaq Wrappingband prior to the application of any Outerwrap. The test must be carried out at a minimum of 15kV.

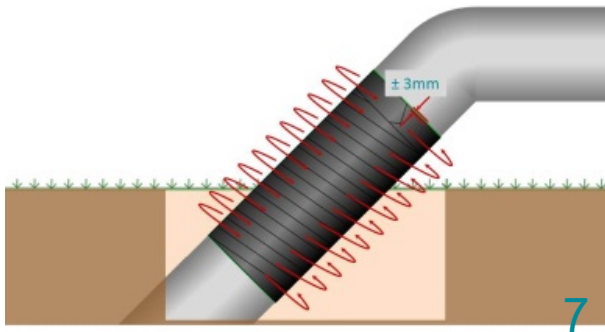


Always use approved and certified holiday test equipment.

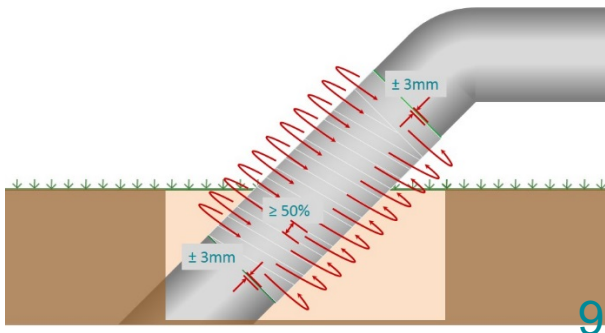


Apply Outerwrap bottom to top, without air inclusions and with tension. Keep 3mm of Wrappingband visible.





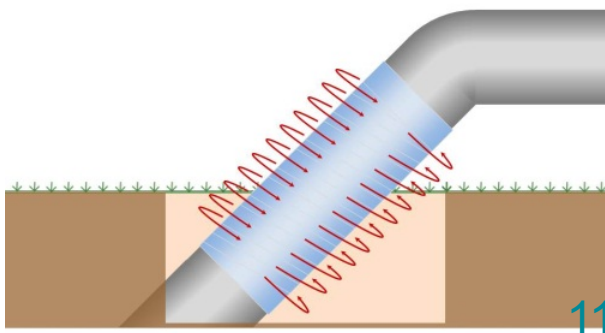
Continue until the entire area is covered. keep 3mm of Wrappingband visible.



Apply Outerglass Shield XT with a minimum overlap of 50%. keep 3mm of Wrappingband visible, see specific chapter for instructions.

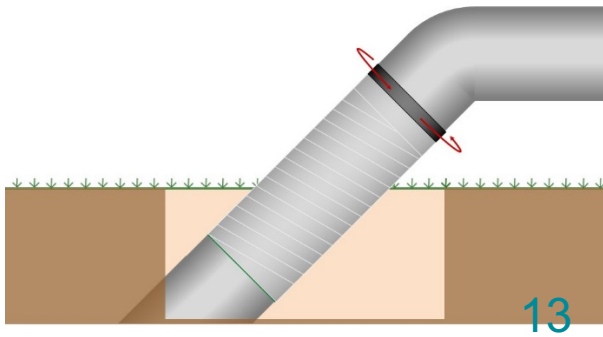


Work bottom to top.



Wrap compression foil over the Outerglass Shield XT. Perforate with perforation roller and remove compression foil after initial curing time.

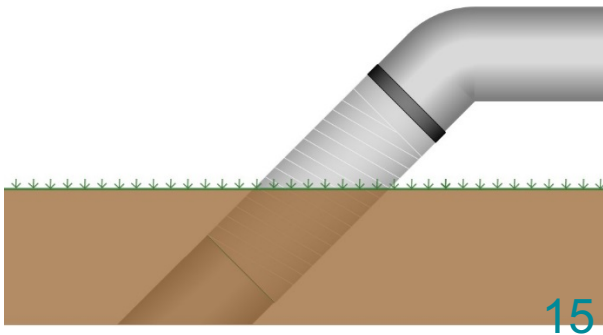




13
Wrap a circumferential wrap of Outerwrap HSPEX over the seam between the coating system and pipeline.



14
Paint the above ground part of the riser with a UV resistant topcoat to prevent discoloration of the Outerglass Shield XT.



15
Backfill with clean sand. Backfill is possible after the topcoat has cured.



16